

Neenah R-4990-HA Airport

Series

R-4990-HA

Cut Sheet

26" Wide Airport Bolted

26" Wide NEENAH Airport Bolted Extra Heavy Duty Trench Drain Grates and Frames

Product ID: R-4990-HA



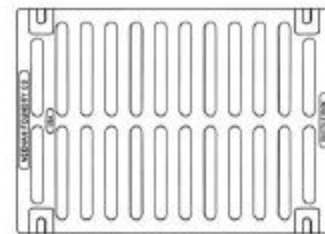
26" Wide Airport Neenah R-4990-HA Series Trench Grate and Frame

Frame is included / Bolted assembly - Please call if only Grate is needed.

| Catalog No. | A | B | C | Grate Matl. |
|--------------|----|---|----|--------------|
| R-4990-AA | 8 | 2 | 6 | Gray Iron |
| R-4990-BA | 10 | 2 | 8 | Gray Iron |
| R-4990-CA | 12 | 2 | 10 | Ductile Iron |
| R-4990-DA ** | 14 | 2 | 12 | Ductile Iron |
| R-4990-EA * | 17 | 2 | 15 | Ductile Iron |
| R-4990-FA * | 20 | 2 | 18 | Ductile Iron |
| R-4990-HA * | 26 | 2 | 24 | Ductile Iron |
| R-4990-KA2 * | 34 | 2 | 31 | Ductile Iron |
| R-4990-OA * | 51 | 2 | 48 | Ductile Iron |

* Type D solid cover available.

** Type C grate available.



TYPE "A"
GRATE OPENINGS

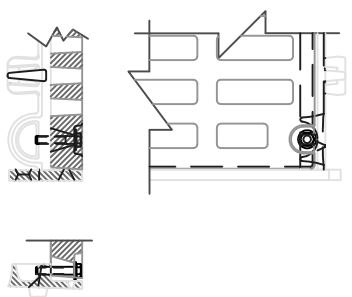
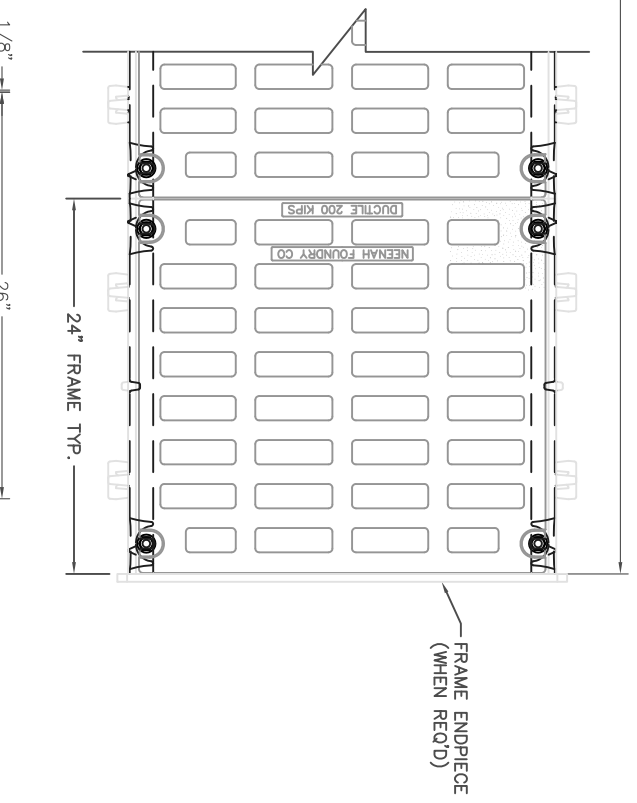
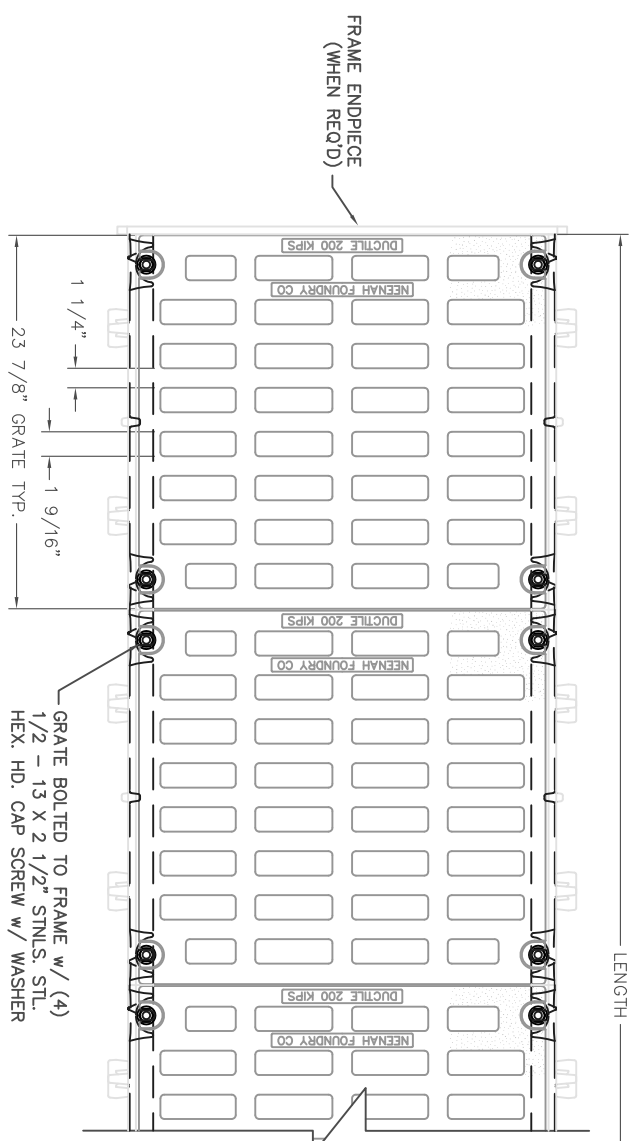
These trench drains are capable of supporting the heavy wheel loads of today's commercial environments. Grates are bolted to gray iron frames.

Suitable for aircraft loading per FAA Advisory Circular AC150/5320-6D.

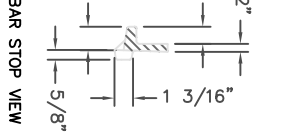
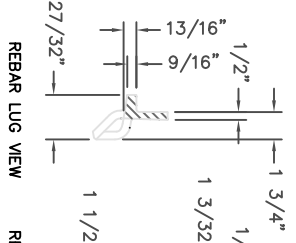
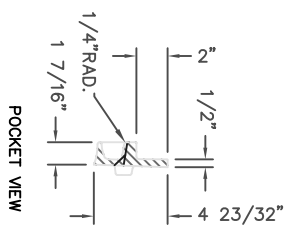
Gray iron furnished per ASTM-A48 Class 35B.

Ductile Iron furnished per ASTM A536 Grade 80-55-06.

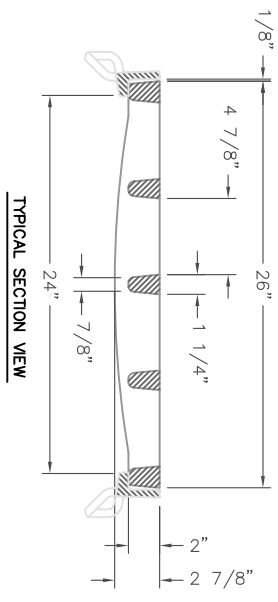




BOLTING DETAIL
SHOWING DEBRIS CHUTE



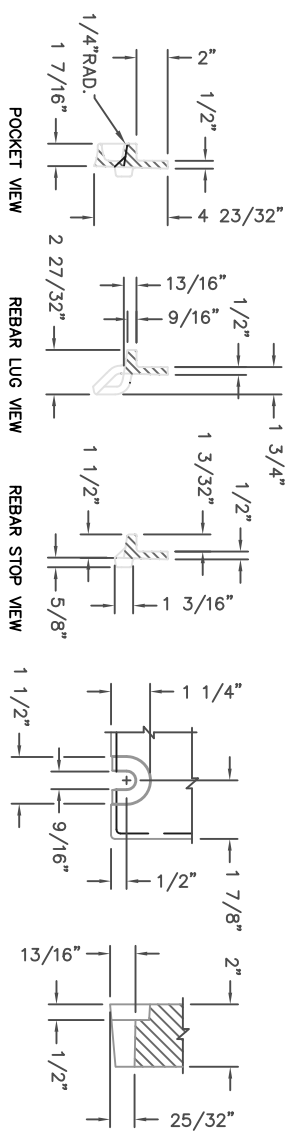
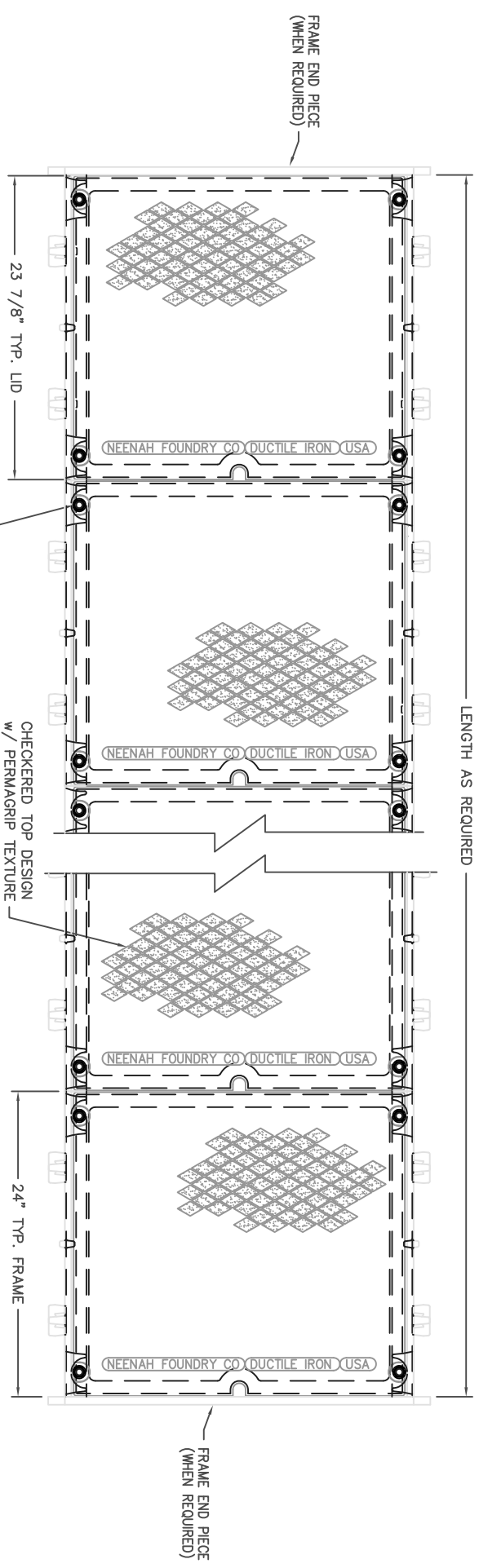
SIDE FRAME SECTION VIEWS



TYPICAL SECTION VIEW

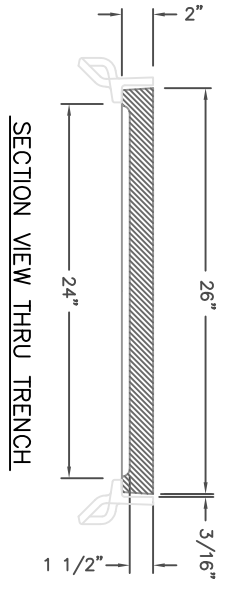
COMPONENT NOS.: SIDE PC. FRAME 4999-2400, END PC. FRAME 4990-3226, GRATE 4999-2026
MATERIAL: SIDE PC. FRAMES - CAST GRAY IRON ASTM A-48, CLASS 35A, END PC. FRAMES - CAST GRAY IRON ASTM A-48, CLASS 35B
 GRATES - CAST DUCTILE IRON ASTM A-536, 55+ KSI YIELD
FINISH: NO PAINT UNLESS SPECIFIED ON PURCHASE ORDER

| | | | | |
|--|------------|---------|-------|--|
| DR. | E. NIVER | SCALE | TITLE | R-4990-HA BOLTED AIRPORT TRENCH TYPE 'A' GRATE w/ TYPE 'B' FRAME |
| CH. | | 1/8"=1" | | |
| APP. | | DM CHK. | | |
| DATE | 06-05-2013 | | | |
| www.neenahfoundry.com | | | | |
| NEENAH FOUNDRY NEENAH WISCONSIN 54856 | | | | |
| PHONE: 1-800-558-5075 | | | | |
| NF-4990HAAB B | | | | |



SIDE FRAME SECTION VIEWS

BOLT SLOT DETAIL
 SCALE 1:4
 USE BOLT KIT #97575



NOTE: ALL DIMENSIONS SHOWN ARE IN ENGLISH
 COMPONENT NOS.: SIDE P.C. FRAME 4999-2400, END P.C. FRAME 4990-3226,
 LID 4999-2027
 MATERIAL: FRAMES - CAST GRAY IRON ASTM A-48, CLASS 35B
 LIDS - CAST DUCTILE IRON ASTM A-536, 55 + KSI YIELD
 FINISH: NO PAINT

CAD DWG. REF: 4990HA.DB.DWG- 1

| | | | |
|-----------------------|------------|---|----------------------------------|
| DR. | RKB | SCALE | TITLE |
| CH. | CAG | 1/8"=1" | R-4990-HA, BOLTED AIRPORT TRENCH |
| APP. | SPT | | TYPE 'D' LID w/ TYPE 'B' FRAME |
| DATE | 04-17-2014 | | |
| www.neenahfoundry.com | | | |
| | | NEENAH WISCONSIN 54956 PHONE 800-558-8075 LINCOLN, NEBRASKA 68529 PHONE 800-234-7466 | |
| | | | NF-4990HADDB |

R-4990 Airport, Port & Heavy Industrial Series

BOLTED TRENCH FOR EXTRA HEAVY DUTY APPLICATIONS

These trench drains are capable of supporting the heavy wheel loads of today's commercial environments. For larger trench widths or greater loading requirements, please contact our Product Engineering Department.

Grates are bolted to gray iron frames.

For suggested forming procedures, see page 285.

Suitable for aircraft loading per FAA Advisory Circular AC150/5320-6D.

| Catalog No. | A | B | C | Grate Matl. |
|----------------|----|---|----|--------------|
| R-4990-AA | 8 | 2 | 6 | Gray Iron |
| R-4990-BA | 10 | 2 | 8 | Gray Iron |
| R-4990-CA | 12 | 2 | 10 | Ductile Iron |
| R-4990-DA * ** | 14 | 2 | 12 | Ductile Iron |
| R-4990-EA * | 17 | 2 | 15 | Ductile Iron |
| R-4990-FA * | 20 | 2 | 18 | Ductile Iron |
| R-4990-HA * | 26 | 2 | 24 | Ductile Iron |
| R-4990-KA2 * | 34 | 2 | 31 | Ductile Iron |
| R-4990-OA * | 51 | 2 | 48 | Ductile Iron |

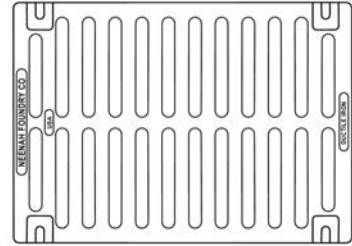
* Type D solid cover available.

** Type C grate available.

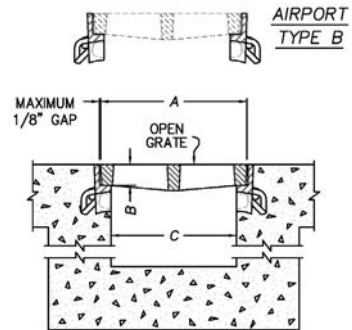
Gray iron furnished per ASTM-A48 Class 35B.

Ductile Iron furnished per ASTM A536 Grade 80-55-06.

These grates are also available with superior duty R-4993 & R-4994 frames as shown on page 287.



TYPE 'A'
GRATE OPENINGS



Supplied By:

**TRENCHDRAIN
SUPPLY**

877-903-7246

www.trenchdrainsupply.com